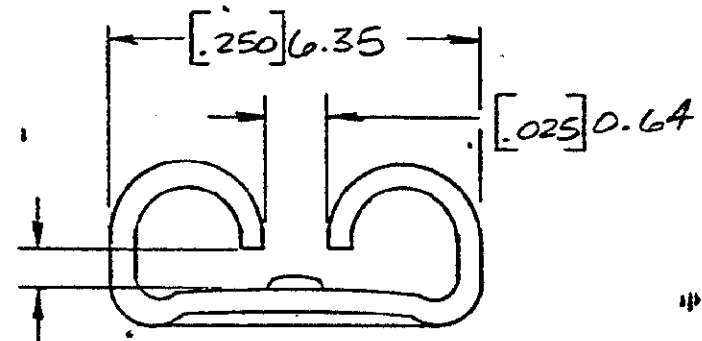
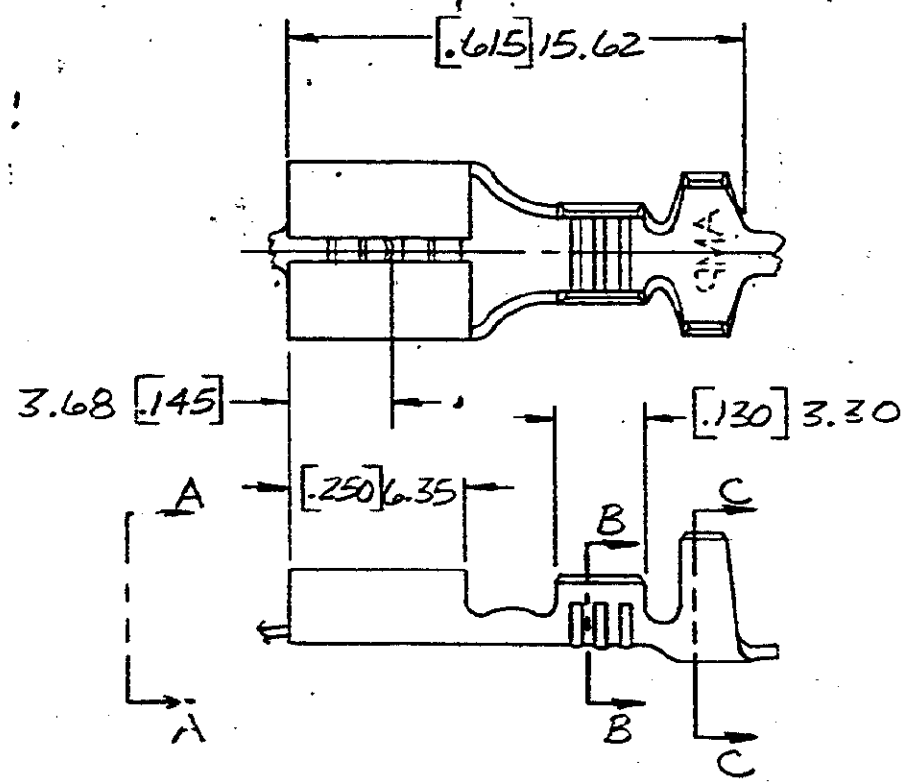


THIS DRAWING IS UNPUBLISHED. RELEASED FOR PUBLICATION

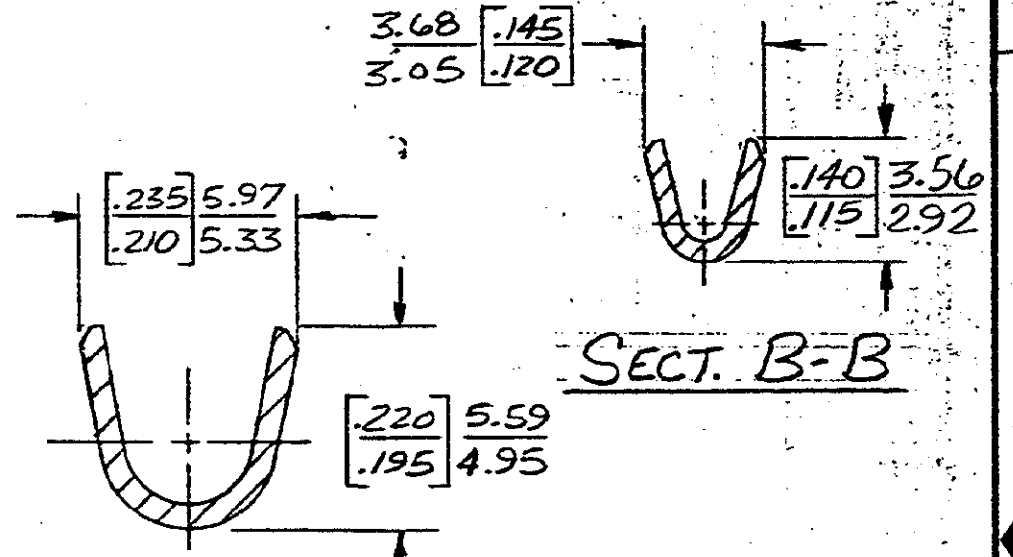
© COPYRIGHT 19 BY AMP INCORPORATED, HARRISBURG, PA. ALL INTERNATIONAL RIGHTS RESERVED. AMP PRODUCTS MAY BE COVERED BY U.S. AND FOREIGN PATENTS AND/OR PATENTS PENDING.

REVISIONS						
P	F	ZONE	LTR	DESCRIPTION	DATE	APVD
			S	REVISED PER ECR-12-013445	24NOV12	PD



FITS .205 SERIES FASTON TAB.

VIEW A-A



SECT. C-C

1 - DIM'S. IN BRACKETS ARE IN INCHES
2 - CONTINUOUS STRIP ON REELS

	[.130-.180] 3.30-4.57	[18-14] 0.8-2.0mm ²	TIN	BRASS	[.020] 0.51	42781-2
OBSOLETE	[.130-.180] 3.30-4.57	[18-14] 0.8-2.0mm ²	NONE	[.016] 0.41 BRASS	[.020] 0.51	42781-1
INSUL. RANGE		WIRE SIZE	FINISH	MATERIAL	TAB THK.	PART NO.

UNLESS OTHERWISE SPECIFIED DIMENSIONS ARE IN INCHES. TOLERANCES ON: DECIMALS [±.005] ANGLES ±	CONTRACT NO		TE Connectivity
	DR <i>DR Rott</i> 4/30/83	CHK <i>G Yetter</i> 7/11/83	
MATERIAL	APPD <i>C. Mingers</i> 7/14/83	APPD <i>V. K...</i> 7/14/83	SIZE B
FINISH	DSGN APPD	OTHER APPD	FSCM NO 00779
			DRAWING NO 42781
			SCALE
			SHEET

METRIC