

4

3

2

1

THIS DRAWING IS UNPUBLISHED.

RELEASED FOR PUBLICATION

© COPYRIGHT

ALL RIGHTS RESERVED.

LOC DIST

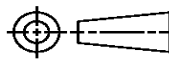
REVISIONS

P	LTR	DESCRIPTION	DATE	DWN	APVD
	C1	ECR-14-003919	18MAR2014	GK	HMR

REPLACED BY OCEAN STYLE APPLICATOR PART NUMBER 2150087-1

FOR REPLACEMENT PARTS FOR APPLICATOR 2114039
REFER TO ADDITIONAL PAGE(S). SPARE PARTS KIT (IF LISTED)
WILL REMAIN AVAILABLE.

THE REPLACEMENT OCEAN STYLE APPLICATOR HAS THE
SAME TERMINATOR/PRESS INTERFACE AS APPLICATOR
2114039

THIS DRAWING IS A CONTROLLED DOCUMENT.		DWN	GOPALAKRISHNA HV		
DIMENSIONS:		CHK	RAGHAVENDRA		
		APVD	RAGHAVENDRA		
TOLERANCES UNLESS OTHERWISE SPECIFIED:		PRODUCT SPEC	NAME		
0 PLC	±	APPLICATION SPEC	END FEED HDI APPLICATOR		
1 PLC	±		SIZE	CAGE CODE	DRAWING NO
2 PLC	±		A3		©- 2114039
3 PLC	±				RESTRICTED TO
4 PLC	±				
ANGLES	±	WEIGHT			
MATERIAL	FINISH	CUSTOMER ACCESSIBLE PRODUCTION DRAWING		SCALE	SHEET 1 OF 2 REV C1



PART NUMBER	REV	TERMINATOR	FEED TYPE	DESCRIPTION
2114039-1	C	BENCH & LEADMAKER	MECH POST FEED	HDI APPLICATOR
7-2114039-1	C	BENCH & LEADMAKER	MECH POST FEED	-1 AND SPARE PARTS
7-2114039-7	B	-	-	SPARE PARTS KIT

SET UP GAGE
458638-3

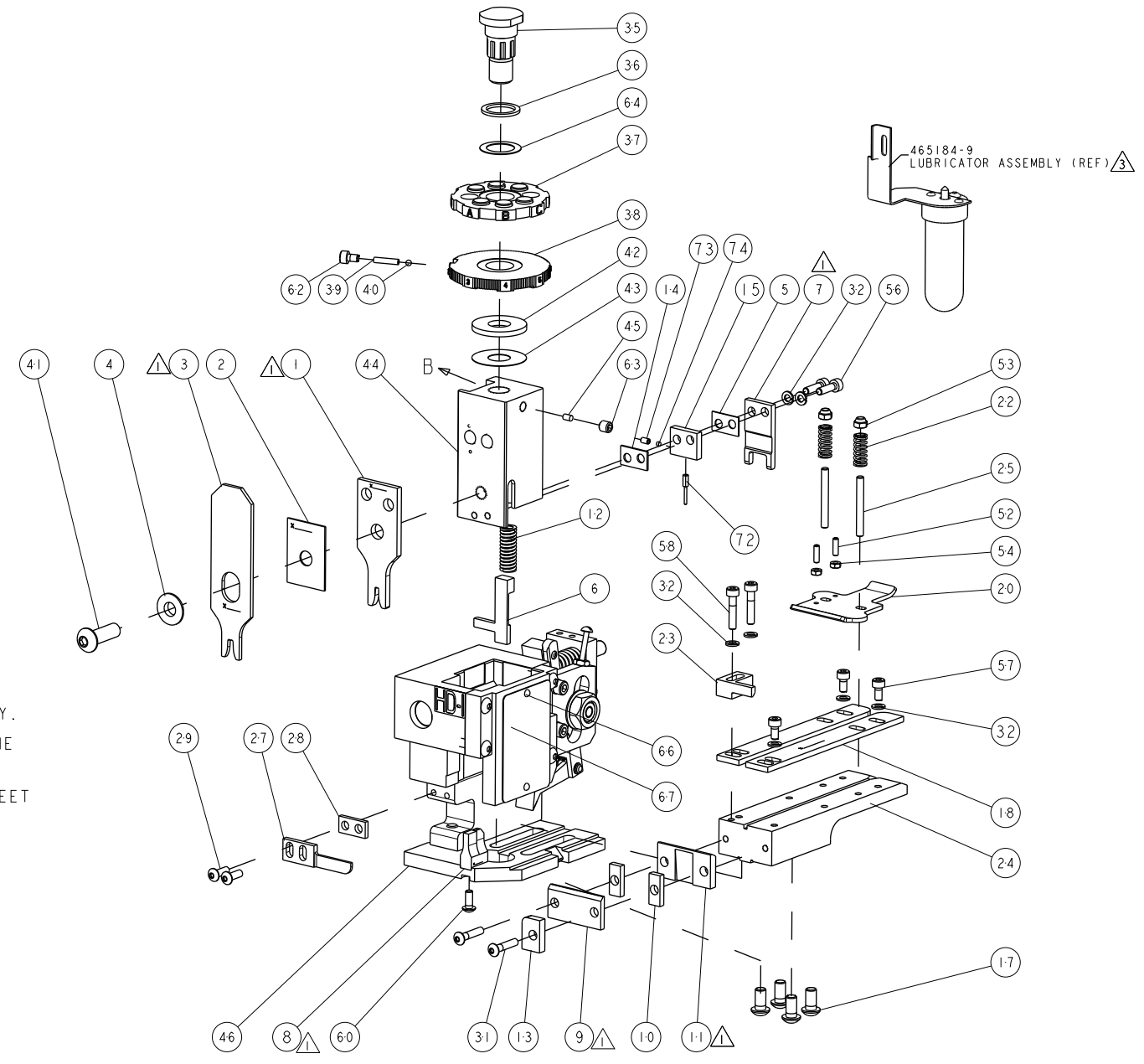
REVISIONS				
REV	DATE	DESCRIPTION	BY	APPV
B	16JUN2010	ECR-10-012834	LG	GB
C	20NOV2013	ECR-13-018185	MY	TE

CRIMP DATA		TE TERMINAL	TE CRIMP SPECS
TERMINAL NAME: 2.3DIA CLUSTER PIN RECEPTACLE			
CRIMP	SIZE	TYPE	RANGE
WIRE	2.29 [.090 IN]	F	0.50-1.25mm ² or 20-16 AWG
INSUL	3.81 [.150 IN]	F	2.0-3.4 [.079-.134 IN]
WIRE STRIP LENGTH 4.45-5.05 [.175-.199 IN]		APPL INSTRUCTIONS 408-8323	
TERMINAL APPL SPEC 114-5235		FEED 20.57 [.810 IN]	

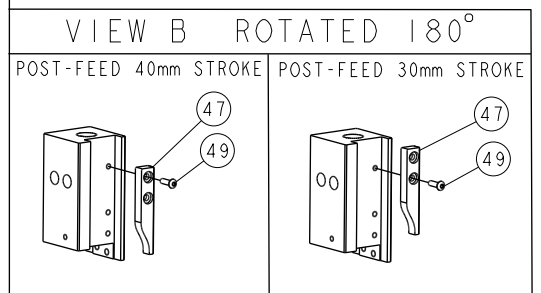
TERMINALS APPLIED			
170063	-	-	-
-	-	-	-
-	-	-	-
-	-	-	-
-	-	-	-

WIRE SIZE	CRIMP HEIGHT	PIN PN & LENGTH [IN]
1.25mm ² OR 16 AWG	1.63 ± 0.05 [.064 ± .002 IN]	8-354778-9 [.294]
0.85mm ² OR 18 AWG	1.47 ± 0.05 [.058 ± .002 IN]	354779-4 [.301]
0.50mm ² OR 20 AWG	1.47 ± 0.05 [.058 ± .002 IN]	354779-2 [.300]
-	-	-
-	-	-
-	-	-
-	-	-
-	-	-
-	-	-
-	-	-

- △ RECOMMENDED SPARE PARTS
- 2. GREASE RAM, CAM, CAM FOLLOWER AND FEED ROD LIGHTLY.
- △ CERTAIN TERMINALS REQUIRE LUBRICATION. REFER TO THE APPLICATOR INSTRUCTION SHEET FOR MORE INFORMATION.
- 4. LUBRICATE DAILY PER THE APPLICATOR INSTRUCTION SHEET SUPPLIED WITH THE APPLICATOR.
- 5. POSITION FEED PAWL OFF OF TEMRINAL RECEPTACLE.



-	1	1	690191-5	PLUG, NYLON	74	
-	1	1	18031-1	SCR, SET, CUP POINT M3 X 5.0	73	
-	1	1	1333249-1	PIN, FORMING	72	
-	1	1	1338705-2	DOCUMENTATION PACKAGE	71	
-	1	1	461264-1	PLATE, IDENTIFICATION	67	
-	2	2	21017-2	SCREW, DRIVE	66	
-	1	1	986950-1	WASHER, FLAT PRECISION	64	
-	1	1	3-18031-0	SCR, SET, CUP POINT M6 X 6.0	63	
-	1	1	18023-9	SCR, SKT HD CAP M4 X 6.0	62	
-	1	1	18024-7	SCR, BTN SKT HD CAP (M4 X 10.0)	60	
-	2	2	1-18023-4	SCR, SKT HD CAP M4 X 20.0	58	
-	3	3	1-18023-0	SCR, SKT HD CAP M4 X 8.0	57	
-	2	2	9-18023-6	SCR, SKT HD CAP M4 X 14.0	56	
-	2	2	18029-1	NUT, HEX, REG M3	54	
-	2	2	986965-1	NUT, LOCK, HEX, TORQUE (M4)	53	
-	2	2	2-18032-2	SCR, SET, FLT POINT M3 X 10.0	52	
-	1	1	18024-3	SCR, BTN SKT HD CAP (M3 X 10.0)	49	
-	1	1	1338676-1	CAM, UNIVERSAL POST-FEED	47	
-	1	1	1338662-2	SUB ASSY, APPLICATOR FRAME	46	
-	1	1	690191-1	PLUG, NYLON	45	
-	1	1	1320998-1	RAM	44	
-	1	1	690125-1	SHIM SUB-ASSY	43	
-	1	1	690124-1	WASHER, RAM (.115)	42	
-	1	1	2-18024-6	SCR, BTN SKT HD CAP (M8 X 25.0)	41	
-	1	1	23241-1	BALL, STEEL	40	
-	1	1	2-22278-7	SPRING, COMPRESSION	39	
-	1	1	1320922-1	DISC, ADJUST, INSULATION CRIMP	38	
-	1	1	354777-1	WIRE DISC, ASSEMBLY	37	
-	1	1	22480-5	SPRING, COMPRESSION	36	
-	1	1	690212-1	POST, RAM	35	
-	7	7	18025-2	WASHER, SPRG LOCK, REG M4	32	
-	2	2	1-18024-0	SCR, BTN SKT HD CAP (M4 X 20.0)	31	
-	2	2	18024-8	SCR, BTN SKT HD CAP (M4 X 12.0)	29	
-	1	1	1-690451-8	SPACER, STRIPPER	28	
-	1	1	240639-3	STRIPPER (MACHINING)	27	
-	2	2	1320906-1	STUD, THREADED	25	
-	1	1	1-1320995-0	PLATE, STRIP GUIDE	24	
-	1	1	240825-3	PLATE, STRIP HOLD DOWN	23	
-	2	2	4-22281-1	SPRING, DRAG	22	
-	1	1	1338665-1	DRAG	20	
-	2	2	454204-4	GUIDE, LOWER STRIP	18	
-	4	4	1-18024-8	SCR, BTN SKT HD CAP (M6 X 12.0)	17	
-	1	1	1333248-1	HOLDER, FORMING PIN	15	
-	1	1	5-240641-9	SPACER	14	
-	1	1	690481-2	SPACER, HOLD DOWN	13	
-	1	1	23846-1	SPRING, DIE	12	
-	1	1	240833-4	PLATE, REAR SHEAR	11	
-	2	2	2-240645-7	SPACER, SHEAR PLATE	10	
-	1	1	690796-2	PLATE, FRONT SHEAR	9	
-	1	2	1633387-5	ANVIL, COMBINATION	8	
-	1	1	2-240651-9	BLADE, SLUG	7	
-	1	1	5-455892-4	HOLD DOWN, TERMINAL	6	
-	1	1	1-240641-7	SPACER	5	
-	1	1	238009-8	BLOCK, FL CRIMPER SPACER	4	
-	1	2	5-1213077-6	CRIMPER, INSULATION PREMIUM	3	
-	1	1	455888-7	SPACER, CRIMPER	2	
-	1	2	1-456406-5	CRIMPER, WIRE PREMIUM	1	
-	77	-71	-1	PART NO	DESCRIPTION	ITEM NO



THIS DRAWING IS A CONTROLLED DOCUMENT. DWG S. ZOU 02JUN2009
 DIMENSIONS: INCHES TOLERANCES UNLESS OTHERWISE SPECIFIED: 0 PLC ±.01, 1 PLC ±.01, 2 PLC ±.01, 3 PLC ±.001, 4 PLC ±.0001, ANGLES ±.01
 APVD S. L. 02JUN2009 NAME END FEED HDI APPLICATOR
 PRODUCT SPEC
 APPLICATION SPEC
 MATERIAL FINISH WEIGHT
 Customer Accessible Production Drawing SCALE 3:5 SHEET 1 OF 1 REV C