

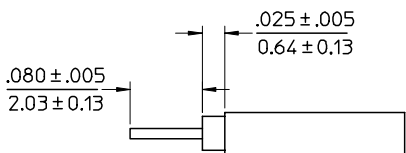
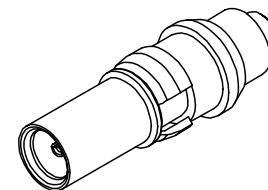
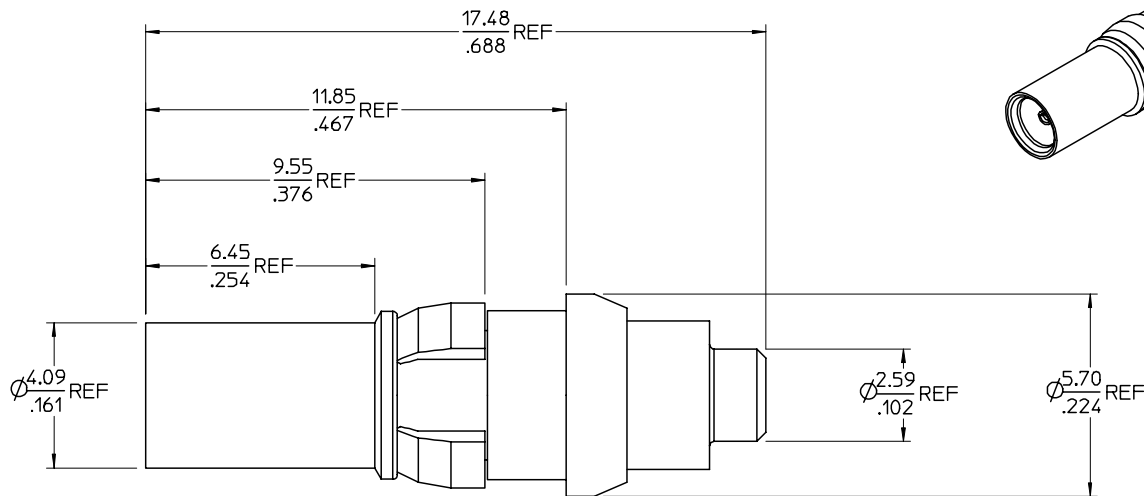
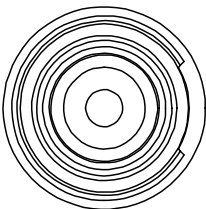
MATERIALS AND FINISHES

BODY: BRASS
 PLATED: GOLD (10 MICROINCHES MIN)

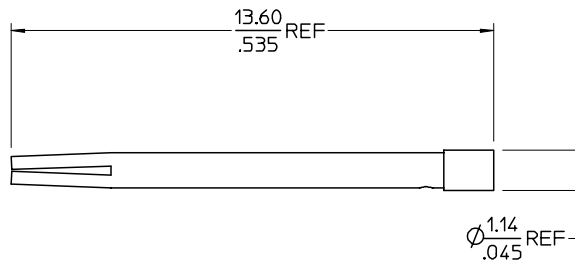
CONTACT: BeCu
 PLATED: GOLD (10 MICROINCHES MIN)

RETAINING RING: BeCu
 PLATED: NICKEL (100 MICROINCHES MIN)

INSULATOR: TEFLON



RECOMMENDED STRIP DIMENSIONS



PART # 73174-0330

- UNLESS OTHERWISE SPECIFIED DIMS ARE INCHES AND ANGLES ARE DEGREES.
- ∇ ALL OVER.
 - NO CHATTER OR NON-UNIFORM
 - SURFACE FINISH ALLOWED.
 - PARTS TO BE FREE OF BURRS & SHARP EDGES 0.13(.005) MAX BREAK.
 - EXTERNAL THREADS TO BE ROLLED OR SINGLE POINT.
 - DIAMETERS TO BE CONCENTRIC WITHIN 0.08(.003) TIR.

SPECIFICATION		DESCRIPTION	
CHG: 13.60 REF WAS 13.34 REF UPDATED DEPICTION OF CONTACT. TITLE WAS DIN 41626. REMOVED DIN SPECIFICATION. BODY PLATING WAS 1 MICROINCHES MIN	EC NO. JDRF-2096 DRWN: SSS 04/15/04 CHK: TEF 04/15/04 APPR: JW 04/15/04	CHG: NEW RELEASE CHANGED ALL DIMS FROM IN/MM TO MM/IN ADDED PLATING THICKNESSES	EC NO. URF-2092 DRWN: TEF 04/05/04 CHK: SSS 04/05/04 APPR: GMH 04/05/04
CHG: 13.60 REF WAS 13.34 REF UPDATED DEPICTION OF CONTACT. TITLE WAS DIN 41626. REMOVED DIN SPECIFICATION. BODY PLATING WAS 1 MICROINCHES MIN	EC NO. URF-2092 DRWN: TEF 04/05/04 CHK: SSS 04/05/04 APPR: GMH 04/05/04	CHG: UPDATED DEPICTION OF CONTACT. .080±.005 WAS .045±.005	DRWN: SSS 02/26/04
CHG: ADDED STRIP DIMENSIONS	DRWN: SSS 02/10/04	CHG: UPDATED DEPICTION OF BODY AND CONTACT	DRWN: SSS 01/21/02/004/01/15
QUALITY SYMBOLS	GENERAL TOLERANCES (UNLESS SPECIFIED)	SCALE	DESIGN UNITS
$\nabla = 0$	4 PLACES ± --- ± --- 3 PLACES ± --- ± --- 2 PLACES ± --- ± --- 1 PLACE ± --- ± ---	INCH	THIRD ANGLE PROJECTION
$\sphericalangle = 0$	ANGULAR ±1/2°	IN/MM	REVISE ON CAD ONLY
DRAFT WHERE APPLICABLE	MUST REMAIN WITHIN DIMENSIONS	DRAWN BY SSS	TITLE
		CHECKED BY TEF	DIN 41626 JACK 50 OHM SR .047 CABLE DIN-JC
		DATE 2004/01/15	MOLEX INCORPORATED
		APPROVED BY JDW	MATERIAL NO. SD-73174-033
		DATE 2003/12/04	DOCUMENT NO. SD-73174-033
			SHEET NO. 1 OF 1
			THIS DRAWING CONTAINS INFORMATION THAT IS PROPRIETARY TO MOLEX INCORPORATED AND SHOULD NOT BE USED WITHOUT WRITTEN PERMISSION